



# Towac

## CONTRACTOR DIVISION PRODUCT GUIDE



**BUILT FOR THE PROFESSIONAL**  
**THE WORLD'S MOST RUGGED INDUSTRIAL VACUUMS**

# TABLE OF CONTENTS

<b>SURFACE PREPARATION</b>	<b>OSHA SILICA SOLUTION</b>
BABY RED PRO	pg. 3
LITTLE RED PRO	pg. 4
RED RAIDER PRO	pg. 5
PATRIOT PRO	pg. 6
POWERHOUSE SERIES	pg. 7
HEC SERIES	pg. 8
XLT SERIES	pg. 9
<b>SLURRY MANAGEMENT</b>	
SLURRY PRO	pg. 10
<b>ABATEMENT AND RESTORATION</b>	
ATTIC VAC - VERMICULITE REMOVAL	pg. 11
ABATEMENT GENERAL RESTORATION	pg. 12
FLOOD VAC - WATER RESTORATION	pg. 13
<b>COMBUSTIBLE DUST</b>	
CERTIFIED EXPLOSION PROOF	pg. 14
<b>ALTERNATIVE POWER</b>	
PROPANE AND GAS VACS	pg. 15
<b>ACCESSORIES</b>	
PACKAGES, FLOOR SWEEPS, DUST ARMS..	SEE BACK

**WWW.RUWAC.COM**

**CALL 413-532-4030**

**EMAIL INFO@RUWAC.COM**

# SURFACE PREPARATION OSHA SILICA SOLUTION

## R150PRO BABY RED PRO



### THE INFAMOUS “SHOP VAC KILLER”

- **1 Motor** - 110/1/60, 86 H2O”, 150 CFM
- Intermittent Duty - Grounded and Non-Sparking by Impact
- “Bulletproof” Oval Composite Modular Housing
- 13 ft<sup>2</sup> MicroClean Primary Filter - 99% Efficient @ 0.5 Microns
- External Filter Cleaning Mechanism for Dustless Filter Maintenance
- **HEPA 2.0** Secondary Filter - 99.97% Efficient @ 0.3 Microns

### OSHA TABLE 1 SIZING CHART

- Up to 6” Handgrinders and Crack Chasers
- Up to 6” Tuck Pointers
- Up to 8” Handheld Power Saws for Fiber Board
- Up to 17” Walk Behind Floor Grinders
- Handheld and Stand-Mounted Drills Including Impact and Rotary Hammer Drills
- Jackhammers
- Handheld Power Chipping Tools
- Dowel Drilling Rigs

**USE UP TO 10’ OF HOSE**

# SURFACE PREPARATION OSHA SILICA SOLUTION

## RB200PRO LITTLE RED PRO BAGGER R200PRO LITTLE RED PRO



### SMALL SURFACE PREP APPLICATIONS

- **2 Motor** - 110/1/60, 97 H2O", 200 CFM
- Intermittent Duty - Grounded and Non-Sparking by Impact
- "Bulletproof" Oval Composite Modular Housing
- 13 ft<sup>2</sup> MicroClean Primary Filter - 99% Efficient @ 0.5 Microns
- External Filter Cleaning Mechanism for Dustless Filter Maintenance
- HEPA 2.0 Secondary Filter - 99.97% Efficient @ 0.3 Microns

### OSHA TABLE 1 SIZING CHART

- Up to 7" Handgrinders, Tuck Pointers and Handheld Crack Chasers
- 8" Scarifiers
- 8" Shotblasters
- Up to 20" Walk Behind Floor Grinders
- Joint Cleanout Saws
- Up to 8" Handheld Power Saws for Fiber Board
- Dowel Drilling Rigs

# SURFACE PREPARATION OSHA SILICA SOLUTION

## RB290PRO RED RAIDER PRO BAGGER R290PRO RED RAIDER PRO



### MEDIUM SIZED SURFACE PREP APPLICATIONS

- **3 Motor** - 110/1/60, 75 H<sub>2</sub>O”, 290 CFM or 220/1/60, 350 CFM Option
- Intermittent Duty - Grounded and Non-Sparking by Impact
- “Bulletproof” Oval Composite Modular Housing
- 13 ft<sup>2</sup> MicroClean Primary Filter - 99% Efficient @ 0.5 Microns
- External Filter Cleaning Mechanism for Dustless Filter Maintenance
- HEPA 2.0 Secondary Filter - 99.97% Efficient @ 0.3 Microns

### OSHA TABLE 1 SIZING CHART

- Up to 7” Handgrinders, Tuck Pointers and Handheld Crack Chasers
- 8” Shotblasters
- 10” Scarifiers
- Up to 28” Walk Behind Floor Grinders
- Joint Cleanout Saws
- Up to 8” Handheld Power Saws for Fiber Board
- Dowel Drilling Rigs

**USE UP TO 50’ OF HOSE**

# SURFACE PREPARATION OSHA SILICA SOLUTION

## RB470PRO PATRIOT PRO BAGGER R470PRO PATRIOT PRO

NEW DOUBLE STACK  
BAGGER DESIGN



### LARGE SURFACE PREP APPLICATIONS

- 4 Motor - 220/1/60, 470 CFM, 97 H2O”
- Intermittent Duty - Grounded and Non-Sparking by Impact
- “Bulletproof” Oval Composite Modular Housing
- 28 ft<sup>2</sup> MicroClean Primary Filter - 99% Efficient @ 0.5 Microns
- External Filter Cleaning Mechanism for Dustless Filter Maintenance
- HEPA 2.0 Secondary Filter - 99.97% Efficient @ 0.3 Microns
- Optional 3 Phase Power DBox for Auxiliary + Fused Motor Protection

### OSHA TABLE 1 SIZING CHART

- Up to (2) 7” Handgrinders, Tuck Pointers and Handheld Crack Chasers
- 10” Shotblasters, 13” Scarifiers, Joint Cleanout Saws
- Up to 32” Walk Behind Floor Grinders
- Up to (2) 8” Handheld Power Saws for Fiber Board
- Dowel Drilling Rigs

## POWERHOUSE SERIES

POWERFUL CONTINUOUS DUTY



### EXTRA LARGE SURFACE PREP APPLICATIONS

- **PB380** - 7.5 Hp Motor, 460/3/60, 98 H<sub>2</sub>O", 380 CFM (Direct Bagger)
- **P500** - 10 Hp Motor, 230/3/60 or 460/3/60, 94 H<sub>2</sub>O", 500 CFM
- **PB500** - 10 Hp Motor, 230/3/60 or 460/3/60, 500 CFM (Direct Bagger)
- 48 ft<sup>2</sup> MicroClean Primary Filter - 99% Efficient @ 0.5 Microns
- Powerful Multi-Stage Turbines

### OSHA TABLE 1 SIZING CHART

- Up to (3) 7" Handgrinders, Tuck Pointers and Handheld Crack Chasers
- 10" Shotblasters, 13" Scarifiers and Joint Cleanout Saws
- Up to 54" Walk Behind Floor Grinders
- Up to (3) 8" Handheld Power Saws for Fiber Board
- Dowel Drilling Rigs

**CONTINUOUS DUTY - MORE POWER**

## HEC SERIES HIGH EFFICIENCY CYCLONES

12" HEC-XLT SHOWN WITH  
PATRIOT PRO



### PRE-SEPARATOR AND BULK MATERIAL COLLECTION

- HEC-S - Standard High Efficiency Cyclone System
  - HEC-DB - Direct Bagging HEC System
  - HEC-XLT - Advanced HEC System with Equalize/Lift/Tip Abilities
- 
- Easily Connects to Vacuum Hose for Pre-Separation
  - 95% Efficiency or Better with Ultra Fine Dust
- 
- Eliminates Filter Clogging While Increasing Collection Capacity
  - Drastically Extends Life of Vacuum Filters
- 
- OSHA Recommends a Cyclonic Pre-Separator for Certain Table 1 Tasks
  - Tipping Drum, Plastic Bag Liner and Lifting Assembly



## XLT SERIES

ALL IN ONE VACUUM AND PRE-SEPARATOR

### POWER PERFORMANCE AND EFFICIENCY

**RX290**

3 MOTOR, 110 VOLT  
290 CFM

**RX470**

4 MOTOR, 240 VOLT  
470 CFM

**WX306**

10HP - GAS  
300 CFM



### XLT BENEFITS

- Power and Performance of the Vacuum System Paired with the Efficiency of the Pre-Separator, all on one Convenient Frame!
- Vacuum, Separate, Lift, Tip and Empty

THE ULTIMATE CONFIGURATION

# SLURRY MANAGEMENT

## SLURRY PRO SLURRY COLLECTION

SHOWN WITH  
42" FLOOR SWEEP

### OPTION 1 42" FLOOR SWEEP



### OPTION 2 32" FLOOR SWEEP



### OPTION 3 20" FLOOR TOOL

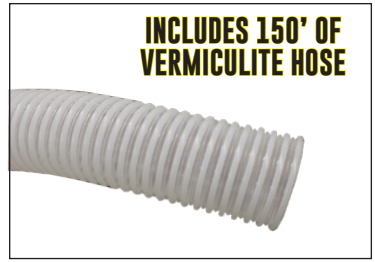


## SLURRY PRO FEATURES AND SPECS

- 2 Motor - 110/1/60, 200 CFM, 97 H2O"
- "Bulletproof" Oval Composite Modular Housing
- Industry Leading Return Pump Designed for Abrasive Solids (38GPM)
- 32 Gallon Liquid Collection Capacity
- 44 ft<sup>2</sup> of Hydrophobic Filtration - 99% @ 0.5 Micron Efficiency
- Positive Closure Float for Liquid Fill Shutoff

# ABATEMENT VERMICULITE REMOVAL

## ATTIC VAC VERMICULITE REMOVAL



### ATTIC VAC FEATURES AND SPECS

- **3 Motor** - 220/1/60, 300 CFM, 149 H2O"
- Includes 150' x 3" Hose
- 12" High Efficiency Cyclone, 55 Gallon Tipping Drum with Lifting Assembly, Plastic Bag Liner and Bulk Removal System for Vermiculite
- Optional Bulk Collector Captures Blown in Insulation
- 40 ft<sup>2</sup> HEPA Filter Purifies and Returns Clean air Down to 0.3 Microns
- Vacuum Capable of Multi-User Functionality

**QUICK AND EASY VERMICULITE REMOVAL**

## R200H

WITH HEPA MAXX FILTER



### VACUUM SPECS

- **2 Motor** - 110/1/60, 200 CFM, 97 H<sub>2</sub>O”
- “Bulletproof” Oval Composite Modular Housing
- 13 ft<sup>2</sup> MicroClean Primary Filter - 99% Efficient @ 0.5 Microns
- External Filter Cleaning Mechanism for Dustless Filter Maintenance
- **HEPA Maxx Secondary Filter** - 99.997% Efficient @ 0.3 Microns

### HEPA VACUUM FOR HAZARDOUS MATERIALS

- Fire Restoration
- Mold, Lead and Asbestos Abatement
- Construction Site Cleanup
- General Housekeeping of Non-Combustible Dust
- Wood Floor Re-finishing
- Mastic Grinding

## FLOOD VAC PRO FOR FLOODS AND WATER REMOVAL

INCLUDES  
32" FLOOR SWEEP



### A POWERFUL MOBILE SUMP PUMP

- **1 Motor** - 110/1/60, 112 CFM, 107 H2O"
- "Bulletproof" Oval Composite Modular Housing
- Separate Return Pump for Simultaneous Vacuum and Discharge (38gpm)
- 12 Gallon Liquid Capacity
- 2" Slide Gate for Manual Liquid Discharge
- 8" Slide Gate for Manual Solids Discharge
- Positive Closure Float for Liquid Fill Shutoff

**DON'T GET CAUGHT WITHOUT IT.**

# COMBUSTIBLE DUST REMEDIATION

## CERTIFIED EXPLOSION PROOF WORKHORSE EX SERIES



**W150EX**

**W300EX**

### EX MACHINES FOR COMBUSTIBLE DUST

- **W150EX** - 110/1/60 or 220/1/60, 1.5 Hp Motor, 75 H<sub>2</sub>O", 150 CFM
- **W300EX** - 230/3/60 or 460/3/60, 5 Hp Motor, 84 H<sub>2</sub>O", 300 CFM
- Class I Div 1,2 (Group D) Class II Div 1,2 (Group F, G)
- Compliant to **NFPA 652** and **NFPA 654** Standards
- "Bulletproof" Oval Composite Modular Housing
- TEFC Motor for Continuous Duty Operation
- Optional HEPA Maxx and ULPA Filtration for air Purification
- Fully Grounded to Protect Against Static Build-up
- Ideal for Overhead Cleaning and Industrial Cleaning of Ultra Fine Dusts
- Other Performance and CFM Options Available

## **ALTERNATIVE POWER** GAS AND PROPANE VACUUMS



### **W306**



### **PB637**

### **ALTERNATIVE POWER OUTDOOR SURFACE PREP**

- **W186** - 5 Hp Gas Powered, 78 H<sub>2</sub>O", 180 CFM
- **W306** - 10 Hp Gas Powered, 111 H<sub>2</sub>O", 300 CFM
- **W307** - 10 Hp Propane Powered, 111 H<sub>2</sub>O", 300 CFM
- **P636** - 15 Hp Gas Powered, 80 H<sub>2</sub>O", 630 CFM
- **PB636** - 15 Hp Gas Powered, 80 H<sub>2</sub>O", 630 CFM (Direct Bagger)
- **P637** - 17 Hp Propane Powered, 80 H<sub>2</sub>O", 630 CFM
- **PB637** - 17 Hp Propane Powered, 80 H<sub>2</sub>O", 630 CFM (Direct Bagger)

### **OSHA TABLE 1 SIZING CHART**

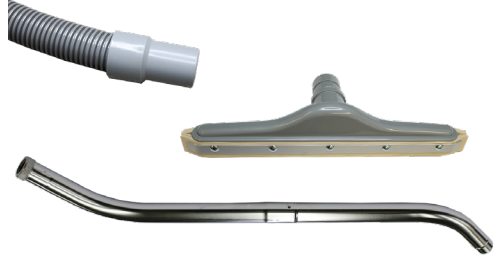
- Up to (3) 7" Handgrinders, Tuck Pointers and Handheld Crack Chasers
- 10" Shotblasters, 13" Scarifiers and Joint Cleanout Saws
- Up to 54" Walk Behind Floor Grinders
- Up to (3) 8" Handheld Power Saws for Fiber Board
- Dowel Drilling Rigs



## ACCESSORY PACKAGES

**#CON152010** 10' OF HOSE  
**#CON152025** 25' OF HOSE

- Crushproof Hose With Connectors
- 2" x 56" Chrome Wand
- 14" Rubber Squeegee Floor Tool



**DUST EXTRACTION ARM: #2004023**  
**RUWAC TOOL/HOSE BAG: #99980**  
**HEPA MAXX UPGRADE KIT: #35192**  
**NEW LOC-LINE DUST ARM: #89233**  
**NEW 42" FLOOR SWEEP: #5022**

**BAGGER CONVERSION KIT**  
**#565301KIT**



**HEPA 2.0 FILTER**  
**99.97% EFFICIENT @ 0.3 MICRONS**



# WWW.RUWAC.COM

**CALL 413-532-4030**

**EMAIL INFO@RUWAC.COM**