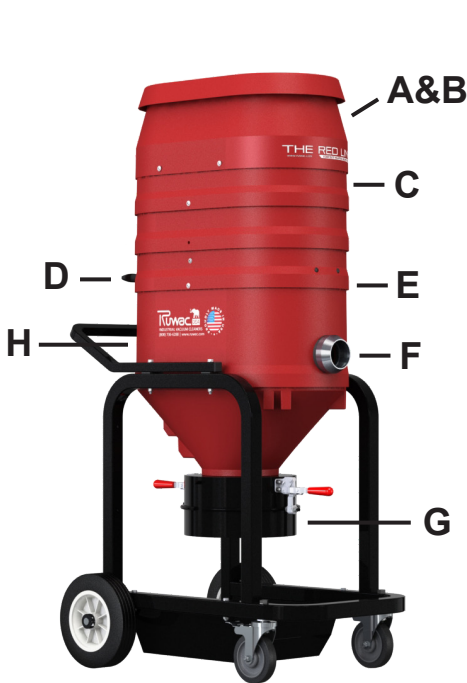


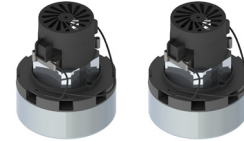
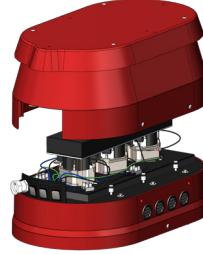


# REDLINE BAGGER

INTERMITTENT DUTY  
INDUSTRIAL HOUSEKEEPING SERIES



## A&B



## C



## E



## G



## REDLINE Bagger Vacuum Technology and Benefits:

### A&B) Dual stage bypass motors (2 or 3 motors, pick model below in specifications)

- 210 CFM to 290 CFM – powerful, runs cooler, and lasts longer

### Superior sound suppression

- Extremely quiet operation with Ruwac's sound suppressing technology

### "Rapid Cool Technology"

- Advanced heat displacement prevents overheating of motors promoting longevity

### C) HEPA 2.0 filter

- Compact secondary filtration system that is 99% efficient @ 0.3 microns

### D) External filter cleaning mechanism

- Clean the filter without disassembling your vacuum. Never come in contact with the dust!

### E) Microclean filter

- 13 SQFT primary filter is 99% efficient @ 0.5 microns

### F) 2" or 2.75" vacuum inlet (depending on model)

- Large inlet for bigger materials and more air flow

### G) Direct Bagging Collection

- Materials fall directly into plastic bag for easy and dustless waste disposal

### H) "Bulletproof" oval vacuum housing

- Compression cast composite that's indestructible, will never dent, rust, or crack!

\*\*Optional HEPA MAXX or HEPA 2.0 and ULPA filtration for air purification