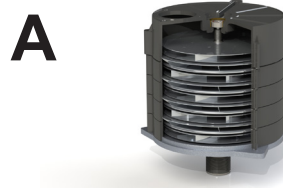
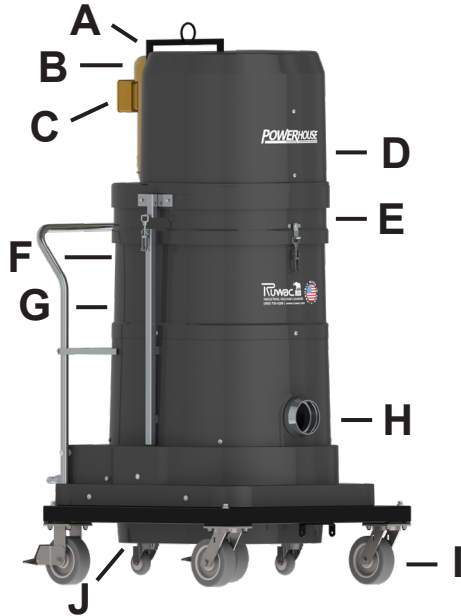




POWERHOUSE PORTABLE

CONTINUOUS DUTY
CLASS II DIVISION 2 LARGE INDUSTRIAL SERIES



Powerhouse Vacuum Technology and Benefits:

- A) Ruwac exclusive Multi-Stage Maxflo turbine**
 - Produces more suction using less horsepower
 - Designed for continuous 24/7 operation
 - Long lasting 15,000 hr run time with no maintenance required
- B) Fully enclosed fan-cooled TEFC motor**
 - Rated for Class II Division 2 Groups F & G
- C) Push Button Starter**
 - Thermal overload for automatic motor shutdown – temperature class 150°C
 - Magnetic compact starter with IP65 enclosure
- D) Superior sound suppression**
 - Silencer provides quiet operation while keeping motor cool during operation
- E) Durable fiberglass reinforced composite housing**
 - Static dissipating – electrically insulating (10-6 ohms resistance) will never dent or rust
- F) External filter cleaning mechanism**
 - Clean the filter without disassembling your vacuum. Never come in contact with the dust!
- G) Industry leading MicroClean filter**
 - Over sized 48 SQFT – 99% Efficient @ 0.5 Microns
- H) Large vacuum inlet**
 - 2.75" or 4" vacuum inlet (depends on model) for collection of large materials
- I) Large anti-static casters**
 - 6" anti-static casters to prevent static buildup
- J) 24 gallon collection capacity – removable dustpan**
 - Materials collect into large foot actuated dustpan with wheels for easy waste disposal

***Optional HEPA Maxx and ULPA filtration for air purification*