

R150 - Replace your Shop Vac and Never Look Back. Fully Grounded, Intermittent Duty

- 110/1/60
- 150 CFM, 2.2 Hp, 85 H2O"
- 13 ft² Primary Filter - 3 Year Filter GUARANTEE
- 9 Gallon Collection Capacity - Dustpan Style
- 2" Vacuum Inlet

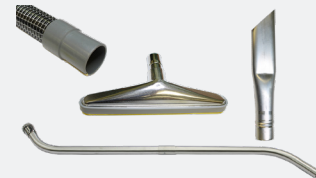
**BEST
SELLER!**



*Package Includes:

- Hose: 1.5"x10' Vinyl Anti-Static
- Wand: 54" Aluminum, 2 Piece
- 14" Metal Floor Tool
- 11" Aluminum Crevice Tool

#IND151510C



CALL FOR PRICING

RB200 - Direct Bagging System for a Higher Level of Protection. Fully Grounded, Intermittent Duty

- 110/1/60
- 200 CFM, QTY(2) 2 Hp, 98 H2O"
- 13 ft² Primary Filter - 3 Year Filter GUARANTEE
- Direct Bagging Collection Style
- 2" Vacuum Inlet



*Package Includes:

- Hose: 2"x10' Vinyl Anti-Static
- Wand: 45" Chrome, Single Bend
- 20" Aluminum Floor Tool w/ Rollers and Rubber Strips

#IND202010F



CALL FOR PRICING

W150 - Class II, Division 2 Environments for Super Fine Dusts. Continuous Duty - Class II, Div 2

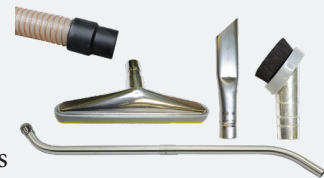
- 110/1/60
- 150 CFM, 1.5 Hp, 75 H2O"
- 13 ft² Primary Filter - 3 Year Filter GUARANTEE
- 9 Gallon Collection Capacity - Dustpan Style
- 2" Vacuum Inlet



*Package Includes:

- Hose: 1.5"x25' Poly, Grounded
- Wand: 54" Aluminum 2 Piece
- 14" Metal Floor Tool
- 11" Aluminum Crevice Tool
- 3" Round Brush, Nylon Bristles

#EXP151525CB



CALL FOR PRICING

W150EX - Certified Explosion Proof For Combustible Applications. Continuous Duty - Class I, II, Division 1,2

- 110/1/60
- 150 CFM, 1.5 Hp, 75 H2O"
- 13 ft² Primary Filter - 3 Year Filter GUARANTEE
- 9 Gallon Collection Capacity - Dustpan Style
- Certified Explosion Proof Vacuum
- 2" Vacuum Inlet

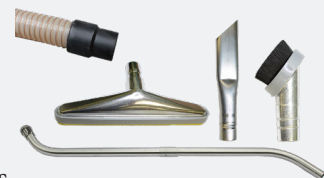
**Highest
Level of
Protection**



*Package Includes:

- Hose: 1.5"x25' Poly, Grounded
- Wand: 54" Aluminum 2 Piece
- 14" Metal Floor Tool
- 11" Aluminum Crevice Tool
- 3" Round Brush, Nylon Bristles

#EXP151525CB



CALL FOR PRICING

OVERHEAD ACCESSORIES EX EXPLOSION PROOF PACKAGE CLASS I & II DIVISION 1 & 2 TOOLS AND BRUSHES

- Curved pipe cleaning brush
- 9" metal wall brush
- 2 lightweight aluminum straight wands



Optional Accessories

Overhead Cleaning Kit #EXP15ER

Self Supporting Dust Extraction Arm Assembly #2004023

32" Floor Sweep Kit (Dry) #5018

32" Floor Sweep Kit (Dry Bagger) #5018DB

Accessories Bag for Hose #99980

Tool Basket #2517601EX

Compact Centrals

Compact Central Vacuum Systems NFPA Compliant - Bring Suction Directly to Your Production Area

- NFPA Compliant Explosion Proof Compact Central Vac Systems
- **Class II, Div 2** or **Class I,II Div 1,2** Certified Vacuum Options
- Lowest Cost of Ownership Central System
- Strategically Place Units Where Needed and Eliminate Downtime
- Unplug and use in Other Areas When Needed
- Under 8 ft³ - no Explosion Vents Required

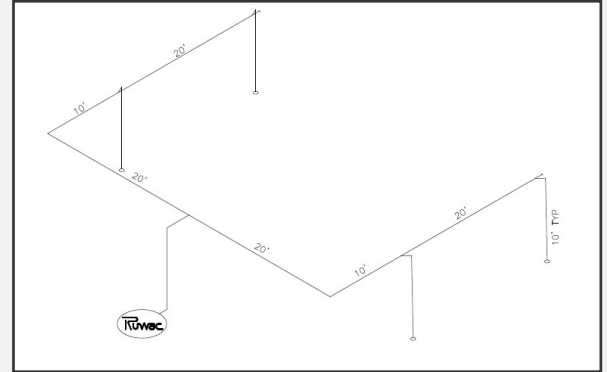


Pricing Below Based off the Following Assumptions:

- For Materials with Average Bulk Density Less than 65 lbs /ft³
- 160 ft of Steel Mechanical Tubing and Fittings (per Print to Right)
- All Drops Estimated at 10ft
- Equipment Installation Elevation Calculated at 1000 ft Above sea Level
- QTY (4) Ruwac Aluminum Cast Inlet Valves
- 5ft Flexible Grounded Connection Hose Vacuum to Tubing System
- Accessories Package **#EXP151525CB** Includes:



- Hose: 1.5"x25' Poly, Grounded
- Wand: 54" Aluminum 2 Piece
- 14" Metal Floor Tool
- 11" Aluminum Crevice Tool
- 3" Round Brush, Nylon Bristles



Class II, Div 2

Class I, II, Div 1, 2

- 1 Operator w/ Accessories Package **#EXP151525CB** QTY(1)
- 2 Operators w/ Accessories Package **#EXP151525CB** QTY(2)
- 3 Operators w/ Accessories Package **#EXP151525CB** QTY(3)

- | | | | |
|-------------|-------------|---------------|-------------|
| W300 | CALL FOR \$ | W300EX | CALL FOR \$ |
| P380 | CALL FOR \$ | P380EX | CALL FOR \$ |
| P500 | CALL FOR \$ | P500EX | CALL FOR \$ |

* All Prices are Estimated and do not Include Shipping and Handling or Additional Tubing, Tools or Hoses
** Compact Central Vacuums are not Eligible for Show Special Free Freight

Separators

- Includes 12" High Efficiency Cyclone
- Heavy Duty Base with 6" Conductive Casters
- Ergonomic HEC Lid Lifting Assembly
- Tipping Drum Assembly with Bag Equalizer Kit

12" XLT **#9955-XLT-EX** - 30 Gallons Extra Collection
Conductive Plastic Bags (#970500C)

CALL FOR \$
 CALL FOR \$

*Shown with P500EX Vacuum



Billing Address:

Name: _____
Company: _____
Address: _____
City: _____ State: _____ Zip Code: _____
Email: _____

TOTAL: \$ _____

Shipping Address:

Name: _____
Company: _____
Address: _____
City: _____ State: _____ Zip Code: _____

Credit Card #: _____ Exp: ___/___ CVC: _____ Signature: _____

*All Pricing subject to change without notice. Ruwac is not responsible for any errors of this document.