

FILTRATION SYSTEM EXTENDS  
THE SERVICE LIFE OF LIQUID  
ELIMINATING MAINTENANCE,  
DOWN TIME, AND WASTE

## MXR331

### LIQUID FILTRATION SYSTEM

- A) Motor Starter*
- B) Fully enclosed TEFC motor*
- C) High Pressure Stainless Steel Centrifugal Pump*
- D) Portable design with low center of gravity*
- E) Pump Discharge Outlet*
- F) Engineered Micro-Fiber Filter Bag*
- G) Filter Intake*
- H) Stainless Steel Housing*



Visit: [www.ruwac.com](http://www.ruwac.com)

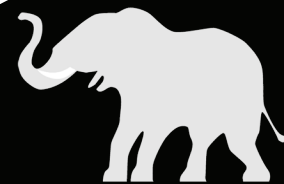


**Check Out The MXR331!**

Email: [info@ruwac.com](mailto:info@ruwac.com)

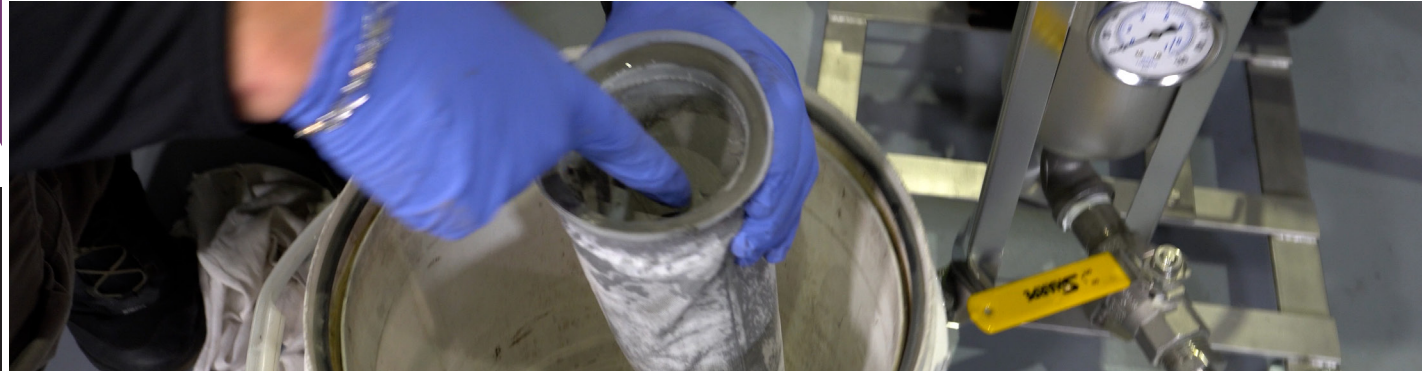
## MXR331

### Liquid Filtration System





# Ruwac.COM



## STEP 1

Connect the hoses to the MX360.  
Open the butterfly valve on the MX360.  
Make sure you have a new filter installed.

## STEP 2

Turn on the Self-Priming MXR331 Pump.  
Run system for 30 minutes.  
Occasionally stop to check the filter bag to see if it's full.

## STEP 3

Remove the filter bag and let it drip dry for proper disposal.  
Depending on how much solids are in your MX360, you might need more than 1 filter.



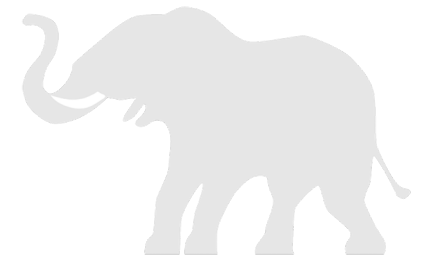
# MXR FILTRATION SYSTEM

REMOVE THE SOLIDS AND RECYCLE THE LIQUIDS

 **RECIRCULATE AND RECYCLE**



- Remove a minimum 95% of the solids from the liquid bath.
- Low Maintenance design with easy access to filters.
- Filter bag is easily removable with no tools.
- Extend the life of your liquid bath.
- Reduce your waste disposal.



## NFPA GROUP E INDUSTRIAL VACUUMS