



PRODUCT GUIDE



COMPACT CENTRAL VACUUM SYSTEMS

TABLE OF CONTENTS

W303EX, W304EX SPEC SHEET pg. 3 & 4

WORKHORSE EX DIAGRAM pg. 5

P503, P504 SPEC SHEET pg. 6

POWERHOUSE DIAGRAM pg. 7

PR56315, PR56415 SPEC SHEET pg. 8

POWERHOUSE REGEN DIAGRAM pg. 9



COMPACT CENTRAL VACUUM SYSTEMS

WWW.RUWAC.COM

CALL (413) 532-4030

EMAIL INFO@RUWAC.COM

WORKHORSE^{EX}

CONTINUOUS DUTY
CERTIFIED EXPLOSION PROOF SERIES

STANDARD SPECIFICATIONS: W303EX, W304EX

- Three Phase TEFC Motor - 230/3/60, 460/3/60, 300 CFM, 5 Hp and 84" H2O
- Ruwac Exclusive Multi-stage Maxflo Turbine
- ETL Certified to UL and CSA Standards - Certified Explosion Proof
- Class I, Div 1,2 (Group D); Class II, Div 1,2 (Group F & G)
- Fully Conductive, Carbon Impregnated **"BULLETPROOF"** Composite Housing
- External Filter Cleaning Mechanism - Dustless Cleaning of Filter
- 28 ft² MicroClean Filter - 99% Efficient @ 0.5 Microns
- 2.75" Vacuum Inlet with Bronze Deflector
- Continuous Duty Operation
- 9 Gallon Collection Capacity - Removable Dustpan

W303EX, W304EX



CERTIFIED EXPLOSION PROOF

www.ruwac.com
Ruwac **USA**
THE FINE DUST EXPERTS

Contact us today for pricing and availability

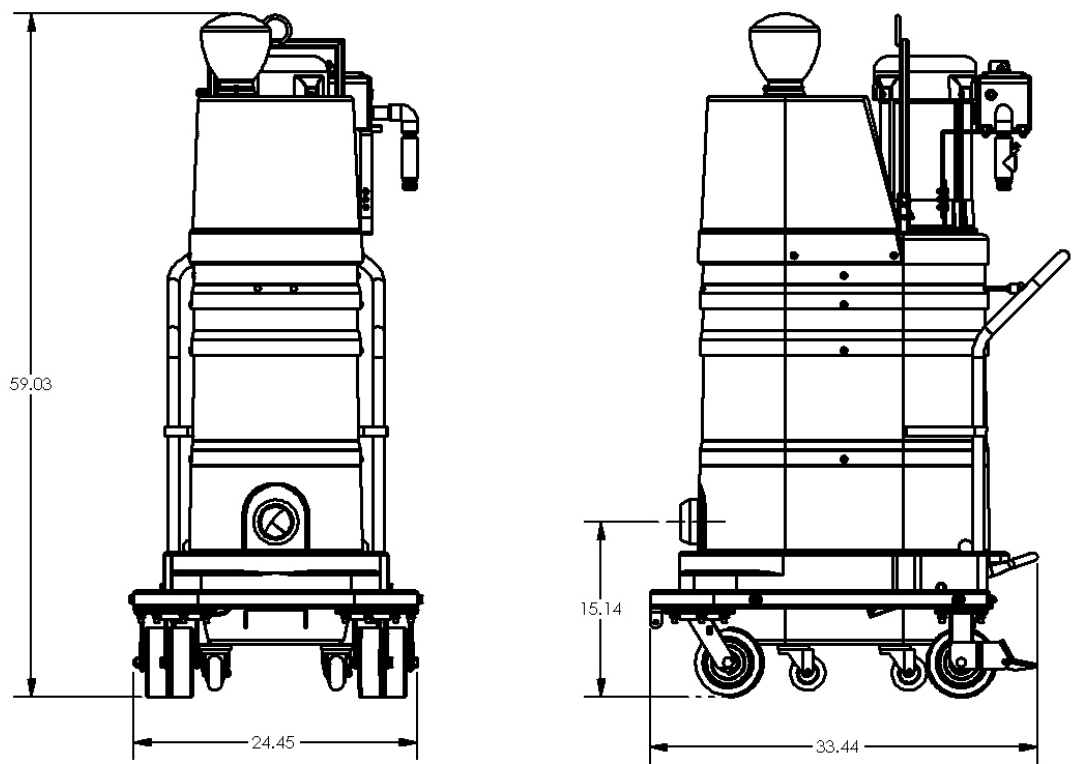
413-532-4030

available upgrades:

- HEPA Maxx Filter
- Dust Extraction Arm

W303EX, W304EX

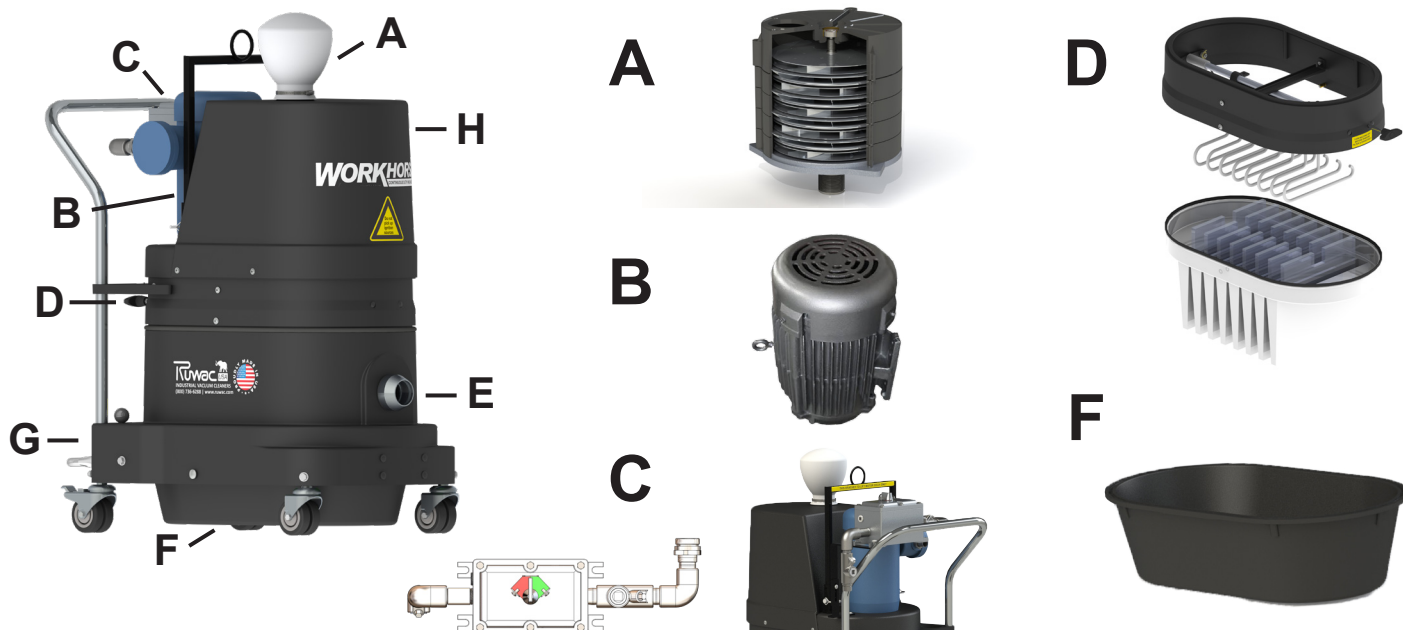
DIMENSIONAL DRAWINGS





WORKHORSE^{EX}

CONTINUOUS DUTY
CERTIFIED EXPLOSION PROOF SERIES



Workhorse EX Vacuum Technology and Benefits:

A) Ruwac Exclusive Multi-Stage Maxflo Turbine

- Produces more suction using less horsepower
- Designed for continuous 24/7 operation
- Long lasting 15,000 hr run time with no maintenance required
- Superior Sound Suppression

B) Fully enclosed Explosion Proof TEFC motor

- Class I, Division 1, Group D
- Class II, Division 1, Groups F & G
- Thermally protected
- Temperature Code: T3B or T3C, varies by Hp

C) Explosion Proof Enclosure

- Class I hazardous locations
- Class II, Groups E, F, & G hazardous locations
- Turn Style Switch
- Class 10, motor overload protection

D) MicroClean Filter with External Cleaning Mechanism

- 99% Efficient @ 0.5 Microns – 3 Year Filter Guarantee
- Clean the filter without disassembling your vacuum. Never come in contact with the dust!

E) Aluminum Cast Grounded Inlet

- Ground and bond your Ruwac's hoses and accessories

F) 9 Gallon Collection Capacity – Removable Dustpan

- Easy-to-empty 9 gallon foot-actuated dustpan

G) Portable design with low center of gravity

- Maneuver the vacuum without the risk of the vacuum tipping over

H) Carbon Impregnated “Bulletproof” Oval Composite Housing

- Indestructible, fully conductive and will never dent, crack or rust!
- Carbon Impregnated and fully grounded to protect against static build-up electrically insulating (10-6 OHMS resistance)

***Optional HEPA Maxx and ULPA filtration for air purification*

POWERHOUSE PORTABLE

CONTINUOUS DUTY

CLASS II DIVISION 2 LARGE INDUSTRIAL SERIES

STANDARD SPECIFICATIONS: P503, P504

- Three Phase TEFC Motor - 230/3/60, 460/3/60, 500 CFM, 10 Hp and 94" H2O
- Ruwac Exclusive Maxflo Multi-Stage Turbine
- Class II, Division 2 - Groups F & G
- Carbon Impregnated Fiberglass Housing
- External Filter Cleaning Mechanism - Dustless Cleaning of Filter
- 48 ft² MicroClean Filter - 99% Efficient @ 0.5 Microns
- 2.75" Vacuum Inlet with Aluminum Cast Deflector
- Continuous Duty Operation
- 24 Gallon Collection Capacity - Removable Dustpan

P503, P504



CLASS II DIVISION 2

www.ruwac.com
RUWAC **USA**
THE FINE DUST EXPERTS

Contact us today for pricing and availability

413-532-4030

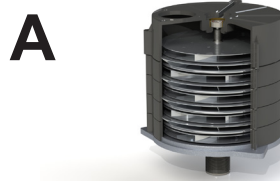
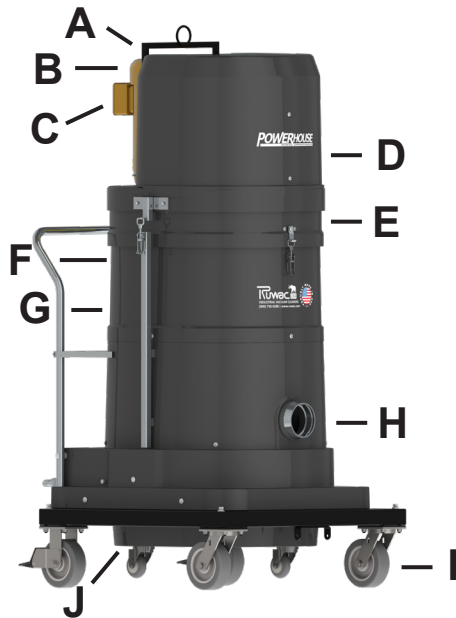
available upgrades:

- HEPA SUPER Maxx Filter
- Dust Extraction Arm
- Pair with Tubing and Fittings for Central Vacuum Capabilities



POWERHOUSE PORTABLE

CONTINUOUS DUTY
CLASS II DIVISION 2 LARGE INDUSTRIAL SERIES



Powerhouse Vacuum Technology and Benefits:

A) Ruwac exclusive Multi-Stage Maxflo turbine

- Produces more suction using less horsepower
- Designed for continuous 24/7 operation
- Long lasting 15,000 hr run time with no maintenance required

B) Fully enclosed fan-cooled TEFC motor

- Rated for Class II Division 2 Groups F & G

C) Push Button Starter

- Thermal overload for automatic motor shutdown – temperature class 150°C
- Magnetic compact starter with IP65 enclosure

D) Superior sound suppression

- Silencer provides quiet operation while keeping motor cool during operation

E) Durable fiberglass reinforced composite housing

- Static dissipating – electrically insulating (10-6 ohms resistance) will never dent or rust

F) External filter cleaning mechanism

- Clean the filter without disassembling your vacuum. Never come in contact with the dust!

G) Industry leading MicroClean filter

- Over sized 48 SQFT – 99% Efficient @ 0.5 Microns

H) Large vacuum inlet

- 2.75" or 4" vacuum inlet (depends on model) for collection of large materials

I) Large anti-static casters

- 6" anti-static casters to prevent static buildup

J) 24 gallon collection capacity – removable dustpan

- Materials collect into large foot actuated dustpan with wheels for easy waste disposal

***Optional HEPA Maxx and ULPA filtration for air purification*

POWERHOUSE REGEN

CONTINUOUS DUTY CLASS II DIVISION 2 LARGE INDUSTRIAL SERIES

STANDARD SPECIFICATIONS: PR56315, PR56415

- Three Phase TEFC Motor - 230/3/60, 460/3/60, 560 CFM, 15 Hp and 110" H2O
- Ruwac Regenerative Vacuum Producer - Superior Suction and CFM
- Carbon Impregnated Fiberglass Housing - Static Dissipating
- External Filter Cleaning Mechanism - Dustless Cleaning of Filter
- 48 ft² MicroClean Filter - 99% Efficient @ 0.5 Microns
- 4" Vacuum Inlet with Aluminum Cast Deflector
- Class II, Division 2 Rated and Continuous Duty Operation
- 24 Gallon Foot Actuated Dustpan for Bulk Collection of Materials

PR56315, PR56415



REGEN

www.ruwac.com
Ruwac **USA**
THE FINE DUST EXPERTS

Contact us today for pricing and availability

413-532-4030

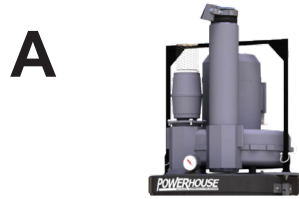
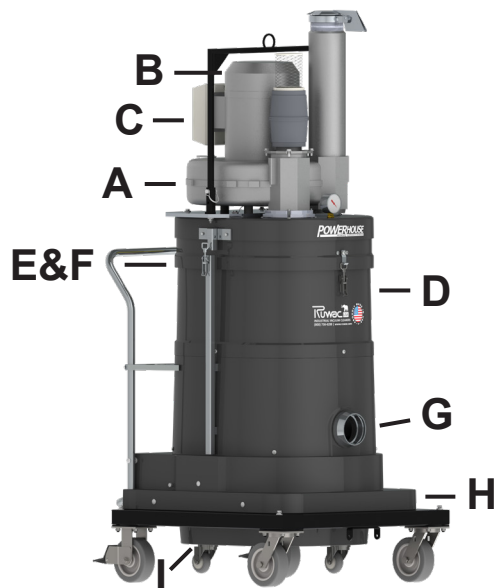
available upgrades:

- HEPA SUPER Maxx Filter
- Dust Extraction Arm
- Pair with Tubing and Fittings
for Central Vacuum Capabilities



POWERHOUSE REGEN

CONTINUOUS DUTY
CLASS II DIVISION 2 LARGE INDUSTRIAL SERIES



Powerhouse Vacuum Technology and Benefits:

A) Ruwac Exclusive Regenerative Blower

- Powerful single stage high pressure vacuum producer
- Onboard spring-loaded relief valve
- Designed for continuous 24/7 operation
- Superior Sound Suppression

B) Fully enclosed fan-cooled TEFC motor

- Rated for Class II Division 2 Groups F & G

C) Push Button Starter

- Thermal overload for automatic motor shutdown – temperature class 150°C
- Magnetic compact starter with IP65 enclosure

D) Durable fiberglass reinforced composite housing

- Static dissipating – electrically insulating (10-6 ohms resistance) will never dent or rust

E) External filter cleaning mechanism

- Clean the filter without disassembling your vacuum. Never come in contact with the dust!

F) Industry leading MicroClean filter

- Over sized 48 SQFT – 99% Efficient @ 0.5 Microns

G) Large vacuum inlet

- 2.75" or 4" vacuum inlet (depends on model) for collection of large materials

H) Large anti-static casters

- 6" anti-static casters to prevent static buildup

I) 24 gallon collection capacity – removable dustpan

- Materials collect into large foot actuated dustpan with wheels for easy waste disposal

***Optional HEPA Maxx and ULPA filtration for air purification*

With over 30 years of proven installations, *Ruwac* will customize your **central vacuum system** with the correct system, vacuum producer, filtration unit, collection container, and tubing system for your needs. Our professional engineers will help you meet **OSHA and NFPA requirements** to present a safe working environment for your employees and properly collect the material in question.

NFPA COMPLIANT CENTRAL VACUUM SYSTEMS



HYBRID EXPLOSION PROOF DUST COLLECTORS

FA3100 SERIES



CUSTOM CENTRAL VACUUM SYSTEMS

Ruwac USA

54 Winter Street
Holyoke, MA 01040

www.ruwac.com

